



Kansas State University Center for Sustainable Energy

**An NSF Integrative
Graduate Education and
Research Traineeship
(IGERT) Program.**

**Contribute to the nation's energy future
while working on a team
addressing global energy problems.**

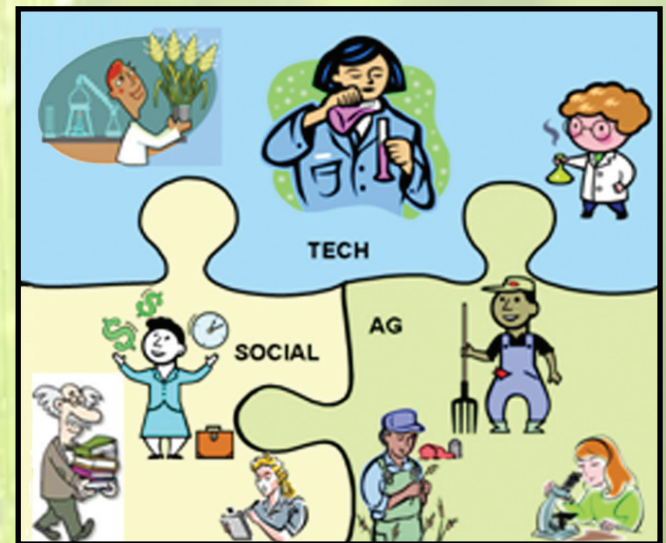
Wanted: Exceptional students in engineering, agriculture, sociology, or economics for interdisciplinary research in sustainable biorefining leading to a Ph.D. This program is for Ph.D. seeking students only who are U.S. citizens or permanent residents.

Areas of research focus include:

**Socioeconomic – Economic and Social
Impacts of Biorefining on Farmers and
Communities**

**Technical – Biomass Conversion into Fuels
and Chemicals**

**Agricultural – Sustainable Biomass
Production, Harvesting, and Transport**



IGERT program highlights:

**Hands-on field experiences from the
crop in the field to biofuel utilization**

**Undergraduate research student
mentoring**

**Graduate certification in biobased
products and bioenergy**

**Short-term educational travel –
Brazil and Europe**

**Support of \$30,000 per year plus
\$10,500 to cover tuition, fees and
other costs of education**



www.igert.ksu.edu

Contact: Keith Rutlin at igert@ksu.edu
for more information

